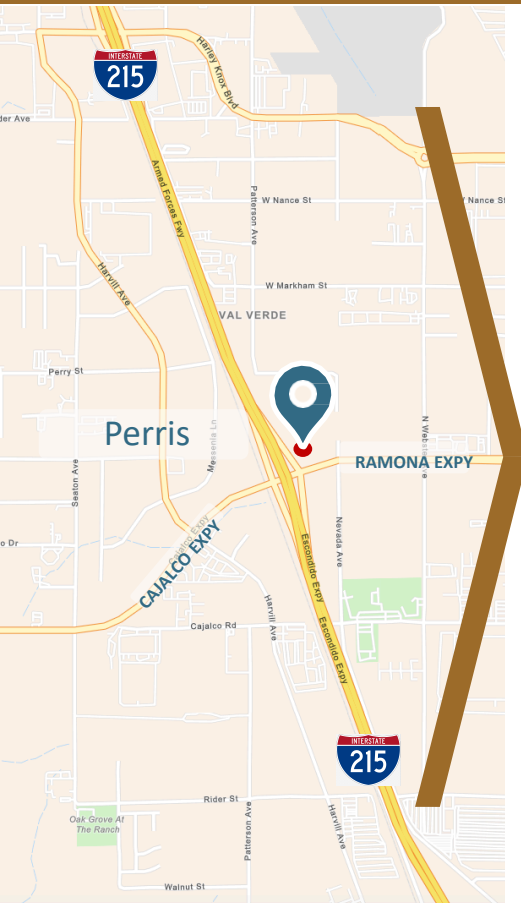


# FOR LEASE PERRIS FWY COMMERCIAL

Fast Food, Restaurants, Commercial Pads

NEQ RAMONA EXPRESSWAY & I-215, PERRIS, CA



## PROPERTY HIGHLIGHTS

- 11 Acres of freeway commercial opportunities
- Maverik Fuel Adventures as anchor, 350 locations in 11 states
- High visibility and easy access
- Fast Food Pads, Commercial Pads available
- Easy I-215 Freeway On/Off ramp at Ramona Expy
- Direct access to high-density high profile distribution hubs

## SUMMARY



CALL FOR TERMS



MULTIPLE DRIVE THRU  
PADS AVAILABLE  
+/- 2,000 – 4,500 SF



FALL 2021

**Randall Dawson**  
Senior Vice President  
(949) 717-7711 x14  
randall@ccprea.com  
Lic 01849790

**Sam Moore**  
Vice President  
(949) 717-7711 x16  
sam@ccprea.com  
Lic 01994931



**CCP Real Estate Advisors**  
140 Newport Center Dr. Suite 120 Newport  
Beach CA 92660  
(949) 717-7711 | (949) 717-0011 fax  
www.ccprea.com

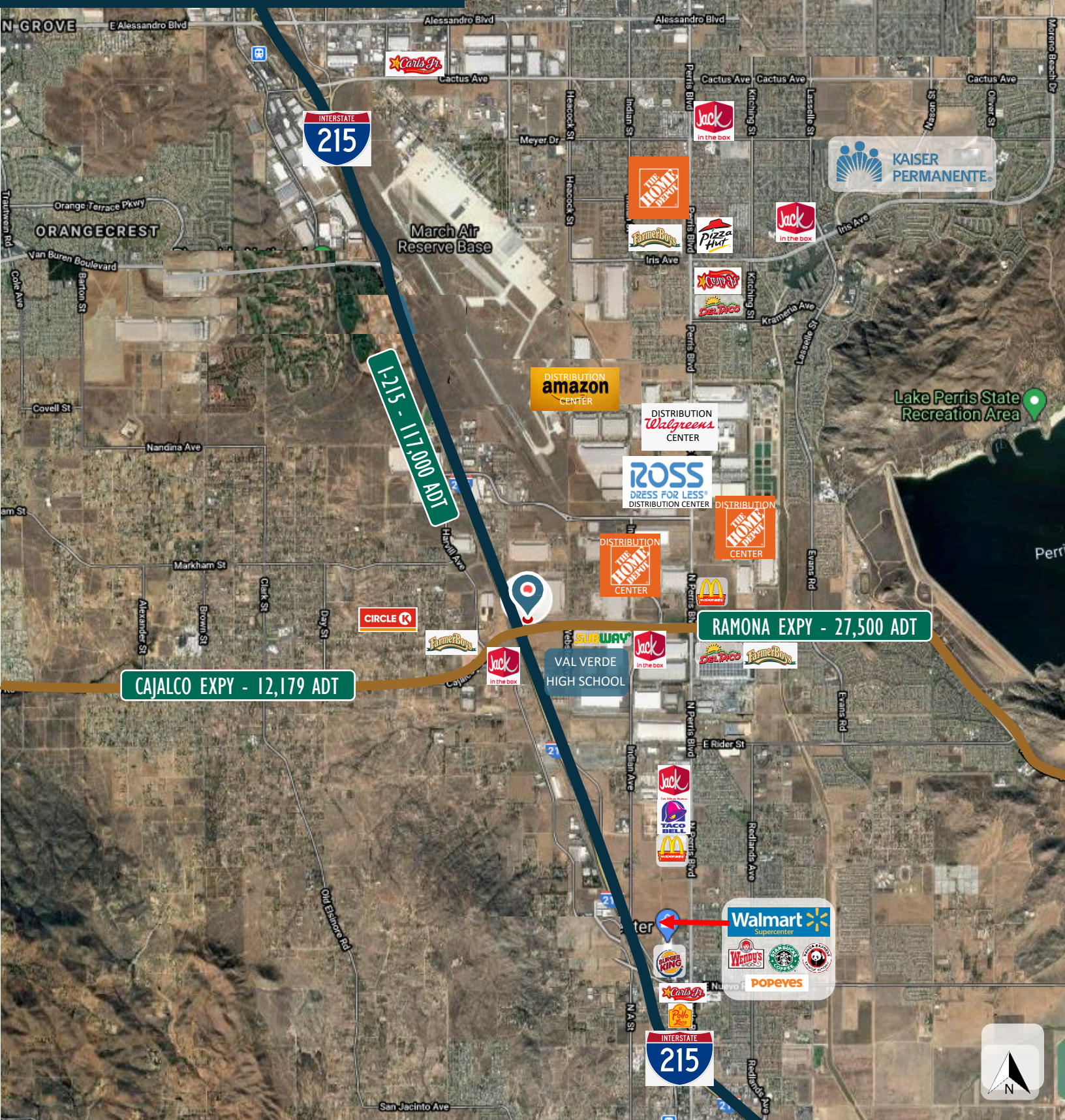


FOR LEASE

# PERRIS FWY COMMERCIAL

Fast Food, Restaurants, Commercial Pads

NEQ RAMONA EXPRESSWAY & I-215, PERRIS, CA



Randall Dawson  
Senior Vice President  
(949) 717-7711 x14  
randall@ccprea.com  
Lic 01849790

Sam Moore  
Vice President  
(949) 717-7711 x16  
sam@ccprea.com  
Lic 01994931



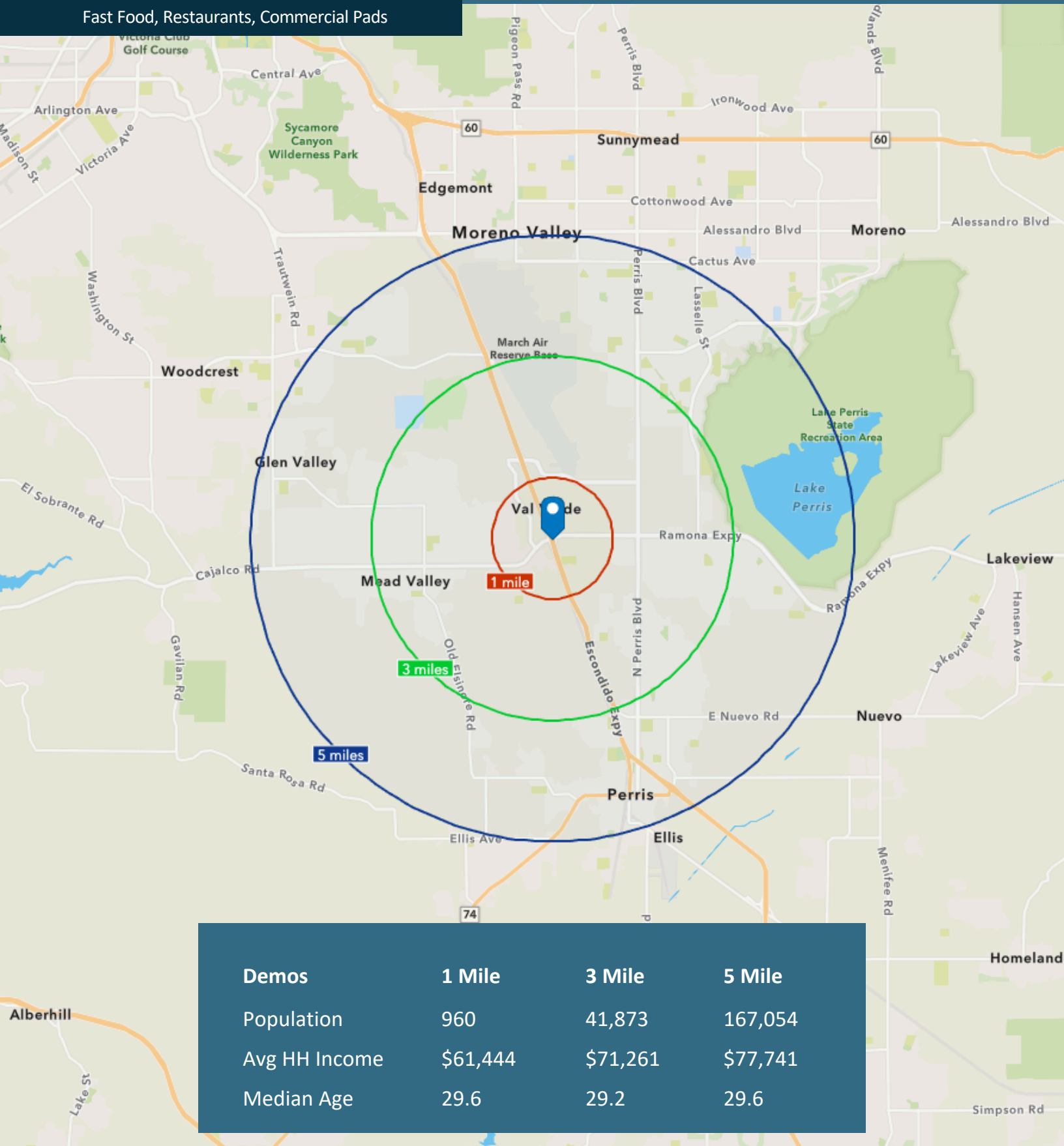
CCP Real Estate Advisors  
140 Newport Center Dr. Suite 120  
Newport Beach CA 92660  
(949) 717-7711 | (949) 717-0011 fax  
www.ccprea.com



# FOR LEASE PERRIS FWY COMMERCIAL

Fast Food, Restaurants, Commercial Pads

NEQ RAMONA EXPRESSWAY & I-215, PERRIS, CA



Demos	1 Mile	3 Mile	5 Mile
Population	960	41,873	167,054
Avg HH Income	\$61,444	\$71,261	\$77,741
Median Age	29.6	29.2	29.6

Randall Dawson  
Senior Vice President  
(949) 717-7711 x14  
randall@ccprea.com  
Lic 01849790

Sam Moore  
Vice President  
(949) 717-7711 x16  
sam@ccprea.com  
Lic 01994931

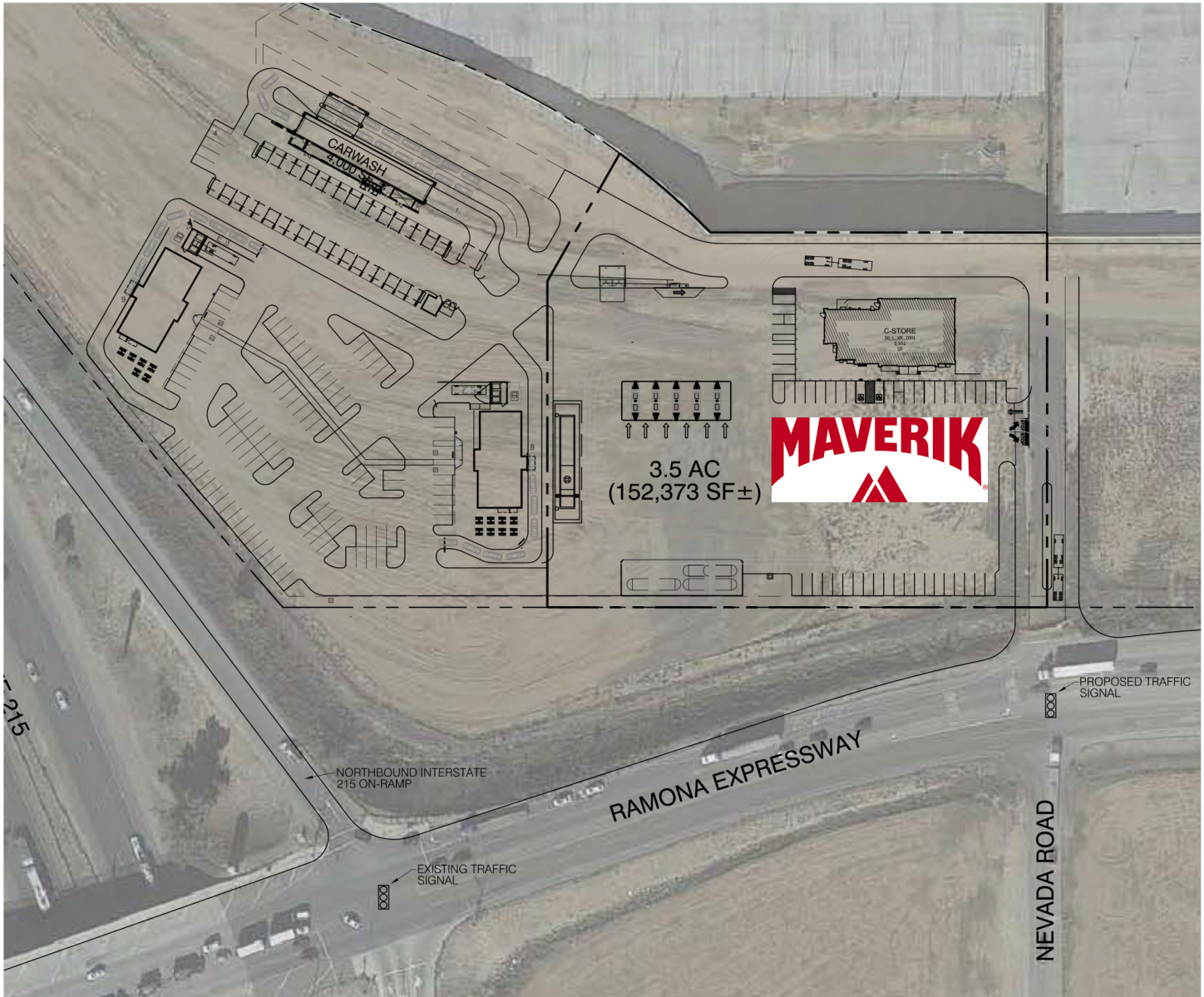


CCP Real Estate Advisors  
140 Newport Center Dr. Suite 120  
Newport Beach CA 92660  
(949) 717-7711 | (949) 717-0011 fax  
www.ccprea.com

# FOR LEASE PERRIS FWY COMMERCIAL

Fast Food, Restaurants, Commercial Pads

NEQ RAMONA EXPRESSWAY & I-215, PERRIS, CA



**Randall Dawson**  
Senior Vice President  
(949) 717-7711 x14  
randall@ccprea.com  
Lic 01849790

**Sam Moore**  
Vice President  
(949) 717-7711 x16  
sam@ccprea.com  
Lic 01994931



**CCP Real Estate Advisors**  
140 Newport Center Dr. Suite 120  
Newport Beach CA 92660  
(949) 717-7711 | (949) 717-0011 fax  
www.ccprea.com



## DISCLAIMER

---

This brochure has been prepared to provide summary, unverified financial and physical information to prospective buyers and/or lessees, and to establish only a preliminary level of interest in the subject property. The information contained herein is not a substitute for a thorough due diligence investigation. CCP Real Estate Advisors has not made any investigation, and makes no warranty or representation with respect to the income or expenses for the subject property, the future projected financial performance of the property, the size and square footage of the property and improvements, the presence or absence of contaminating substances, PCBs or asbestos, the compliance with local, state and federal regulations, the physical condition of the improvements thereon, or the financial condition or business prospects of any tenant, or any tenant's plans or intentions to continue its occupancy of the subject property. The information contained in this brochure has been obtained from sources we believe to be reliable; however, CCP Real Estate Advisors has not verified, and will not verify, any of the information contained herein, nor has CCP Real Estate Advisors conducted any investigation regarding these matters and makes no warranty or representation whatsoever regarding the accuracy or completeness of the information provided. All potential buyers and/or lessees must take appropriate measures to verify all information set forth herein. Prospective buyers and/or lessees shall be responsible for their costs and expenses of investigating the subject property.

**Randall Dawson**  
Senior Vice President  
(949) 717-7711 x14  
randall@ccprea.com  
Lic 01849790

**Sam Moore**  
Vice President  
(949) 717-7711 x16  
sam@ccprea.com  
Lic 01994931



**CCP Real Estate Advisors**  
140 Newport Center Dr. Suite 120  
Newport Beach CA 92660  
(949) 717-7711 | (949) 717-0011 fax  
www.ccprea.com